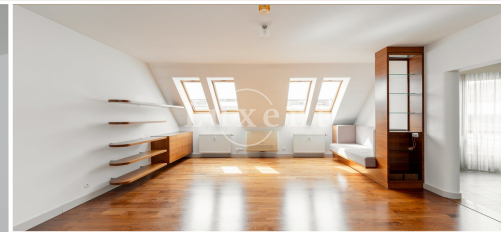




## Sale of an exclusive apartment 5+kk/T/2B/2GS, 194 sqm, Prague 6 - Břevnov



🏠 194 m<sup>2</sup> 📄 Slavníkova, Praha 6 - Břevnov 📞 on request



WITH THIS PROPERTY, YOU'LL BE ASSISTED BY

**Mgr. Adam Kvasnička**  
LEASE SPECIALIST

adam.kvasnicka@luxent.cz  
+420 730 511 611

|              |                                      |                                    |                          |
|--------------|--------------------------------------|------------------------------------|--------------------------|
| Order number | <b>N6890</b>                         | Price                              | <b>on request</b>        |
| Address      | <b>Slavníkova, Praha 6 - Břevnov</b> | Type                               | <b>Apartments</b>        |
| Disposition  | <b>5 + kitchenette</b>               | Usable area                        | <b>194 m<sup>2</sup></b> |
| Low energy   | <b>No</b>                            | Energy performance of the building | <b>C - Economical</b>    |
| Floor        | <b>6th floor</b>                     | Parking                            | <b>2</b>                 |
| Garage       | <b>Yes</b>                           | Balcony                            | <b>7 m<sup>2</sup></b>   |
| Terrace      | <b>93 m<sup>2</sup></b>              | Cellar                             | <b>10 m<sup>2</sup></b>  |

## About real estate

We present for sale an exclusive two-storey apartment of 5 + kk in an attractive location in Prague 6 - Břevnov. This unique apartment with a total usable area of 194 sqm, complemented by a roof terrace of 93 m<sup>2</sup> and two balconies with a total area of 7 sqm, offers comfort, style and plenty of privacy for those looking for exceptional living close to the center of Prague.

The apartment is situated on the sixth and seventh floors of a residential building and its layout is designed for maximum comfort and functionality. On the first floor there is an entrance hall with built-in wardrobes, a master bedroom with access to the balcony, which has an en-suite bathroom equipped with a bathtub, double sink, toilet and bidet. In addition, the apartment has two more non-contiguous bedrooms, a bathroom with shower and a separate toilet.

The central part of the apartment is a spacious living room connected to a modern equipped kitchen, which also has access to a second balcony. If you climb the staircase to the second floor, you will find yourself on the 93 sqm roof terrace, which provides views of the surrounding area and will become your private retreat for relaxation and social events.

The entire apartment is equipped with quality materials and modern technology, including outdoor blinds and a fireplace that adds a cosy atmosphere to the home. All rooms are air conditioned. The master bedroom also includes a walk-in closet to satisfy even the most demanding storage space requirements.

The apartment also includes two parking spaces in the underground garage and a 10 sqm basement.

The house is situated in a quiet and attractive part of Prague 6 - Břevnov with excellent amenities, including schools, shops, restaurants and cafes, making the location ideal for families with children. There is public transport in close proximity, providing convenient access to all parts of Prague. The location is known for its excellent accessibility, both to the city centre and to the main motorways leading out of the city. Václav Havel International Airport is located approximately 20 minutes away by car, which is a great advantage for frequent travellers or professionals working with international partners.

The apartment is an ideal choice for those looking for comfortable living with excellent accessibility and all necessary infrastructure within easy reach.