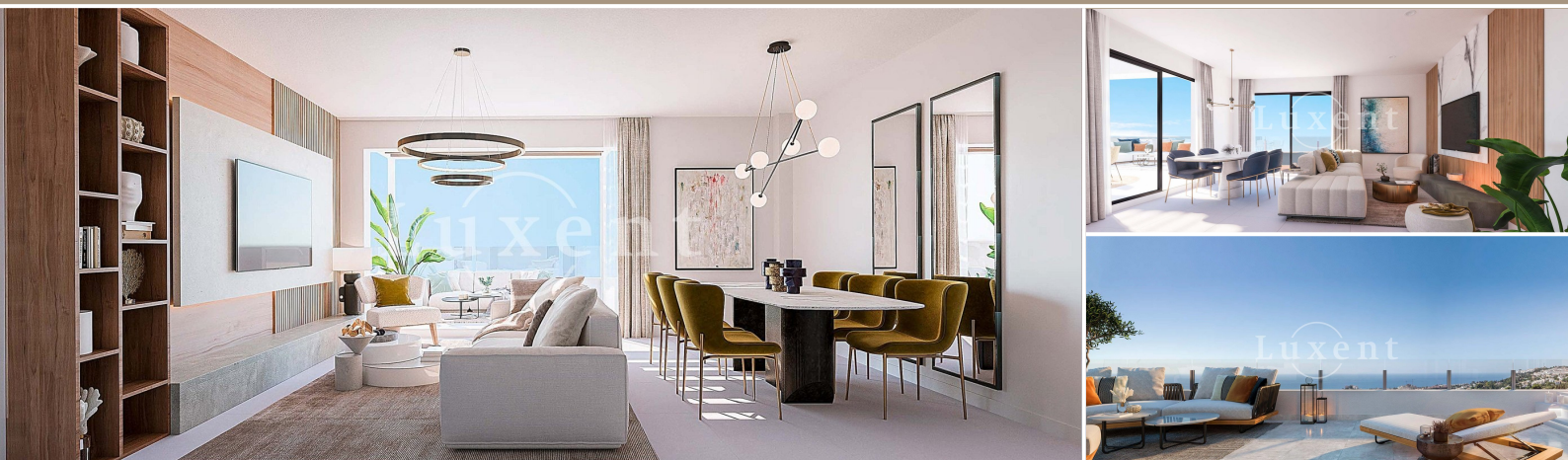




## A sale of a luxurious apartment 4+kt/T with sea view, 124 sqm, Benalmadena - Spain



🏠 124 m<sup>2</sup> 📄 Benalmádena, Spain 🏠 11 312 555 CZK per property



WITH THIS PROPERTY, YOU'LL BE ASSISTED BY

**Mgr. Jesika Schopper**

FOREIGN PROPERTY SPECIALIST

jesika.schopper@luxent.cz

+420 778 771 771

Order number	<b>N6821</b>	Price	<b>11 312 555 CZK per property</b>
Address	<b>Benalmádena, Spain</b>	Type	<b>Apartments</b>
Disposition	<b>4 + kitchenette</b>	Usable area	<b>124 m<sup>2</sup></b>
Low energy	<b>No</b>	Energy performance of the building	<b>G - Extremely uneconomical</b>
Floor	<b>1st floor</b>	Parking	<b>1</b>
Terrace	<b>30 m<sup>2</sup></b>	Cellar	<b>Yes</b>

## About real estate

We offer for sale a luxury apartment with a floor area of 124 sqm in the Spanish area of Benalmadena. Spacious apartment with three bedrooms and two bathrooms located on the ground floor of the building. It is a spacious and bright apartment with a private garden and terrace of 30 sqm.

Outdoor common areas at this residence include a community pool with salt chlorination, paved with Rosagres porcelain pavers. The project is surrounded by large green areas that combine grass platforms with Mediterranean-style shrubbery. The owners will also have a multifunctional room usable for various purposes. The apartment comes with a parking space in the garage with automatic entrance door.

The project places great emphasis on the selection of high quality materials and technical equipment that meet the highest standards for size and quality. The main bathroom has porcelain tiles of stoneware CARRARA PORCELANOSA type. The kitchens are fully equipped with Siemens appliances. The exterior blinds in the bedrooms with aluminium slats are in the same colour scheme as the frames, blending beautifully with the design of the apartment. Integrated LED lighting in the interior, installed air conditioning and underfloor heating are standard here.

In the nearby city centre you will find the International School, Selwo Harbour, and Paloma Park. The Torrequebrada Golf Course and Xanit Hospital are also in the immediate vicinity of the complex. A bonus of the property is its strategic location, just 30 minutes drive from Malaga.

Benalmadena boasts over 8 km of coastline, on which you will find charming rocky areas with small coves and cliffs, as well as extensive sandy beaches that can be enjoyed at any time of the year. The Senda Litoral promenade, which runs close to the coast, allows you to take long walks or runs.

Scheduled completion of construction Q4 2025.

Feel free to contact us for more information.