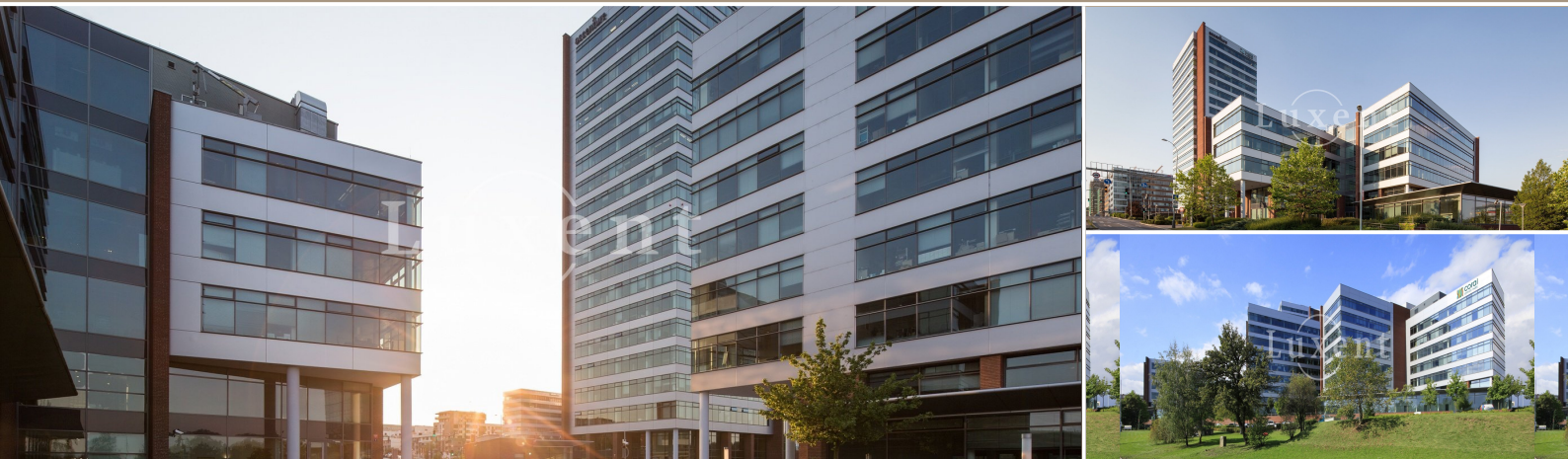
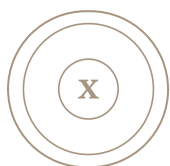




Rent of an office in a new office park project, 422 sqm, Prague 5 - Nové Butovice



🏠 422 m² 📄 Bucharova, - Stodůlky 🏠 353 CZK per m² / month



WITH THIS PROPERTY, YOU'LL BE ASSISTED BY

Filip Sloupenský

filip.sloupensky@luxent.cz

+420 771 229 229

Order number	COP-1	Price	353 CZK per m² / month + VAT + fees
Address	Bucharova, - Stodůlky	Type	Offices
Usable area	422 m²	Parking	5
Floor area	422 m²	Office area	422 m²
Area of non-residential premises	422 m²	Low energy	No
Energy performance of the building	G - Extremely uneconomical	Floor	1st floor
Garage	Yes	Lift	Yes
Year of construction	2002	Date to move in	15. 2. 2023

About real estate

Our company offers an office unit, located on the 1st floor of a modern building, located in close proximity to the B New Line metro station, just a few minutes by car from the Prague circuit and the D5 highway.

Office space allows large-scale office solutions as well as enclosed offices, new low ceilings and LED lighting, effective office partitioning with a 1.35 m module, a separate kitchen for each tenant and high-speed elevators. There are also fully openable windows in the buildings, central HVAC in all buildings, 4 tubular air conditioning and temperature control in individual zones.

The buildings include reception with turnstiles, 24-hour security service, ACS access system (magnetic cards), electronic fire alarm system in each building, sprinklers in C and D buildings, electronic fire detectors in each building, CCTV system monitoring all buildings and their surroundings.

Parking is provided directly in the building.

For more information, do not hesitate to contact us.

We recommend a tour.