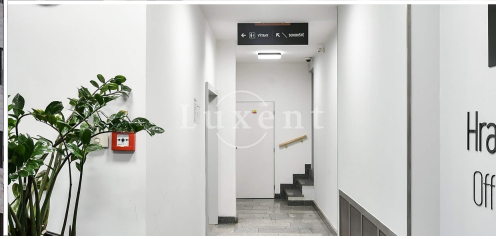
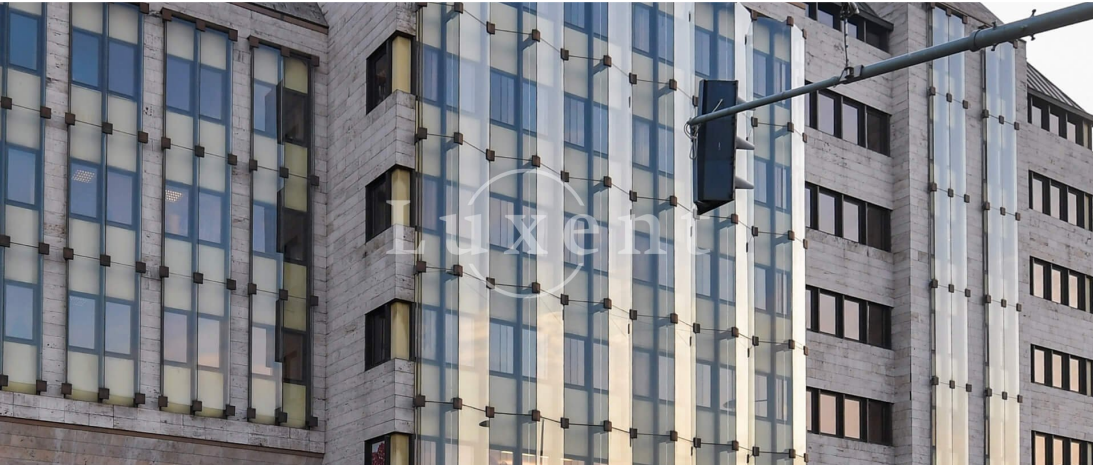




## Rent of a commercial unit, 120 sqm, Praha - Bubeneč



🏠 120 m<sup>2</sup> 📄 Milady Horákové, Praha 6 - Bubeneč 📄 330 CZK per m2 / month



WITH THIS PROPERTY, YOU'LL BE ASSISTED BY

**Filip Sloupenský**

COMMERCIAL LEASE SPECIALIST

filip.sloupensky@luxent.cz

+420 771 229 229

Order number	<b>N7001</b>	Price	<b>330 CZK per m2 / month + services</b>
Address	<b>Milady Horákové, Praha 6 - Bubeneč</b>	Type	<b>Offices</b>
Usable area	<b>120 m<sup>2</sup></b>	Parking	<b>Yes</b>
Low energy	<b>No</b>	Energy performance of the building	<b>G - Extremely uneconomical</b>
Floor	<b>2nd floor</b>	Device	<b>Partly</b>
Lift	<b>Yes</b>	Date to move in	<b>7. 8. 2024</b>

## About real estate

We offer for rent office space in an office building near the Hradčanská metro station in a building with a rich history. Originally the building served as the headquarters of the Ministry of Electrical Industry and later as the home address of Škoda. After extensive renovation, it now offers more than 9,000 m<sup>2</sup> of rentable space in a quiet and picturesque area of Prague 6.

The complex consists of two buildings that are interconnected by communication and stand out architecturally and technically. Thanks to its conceptual flexibility, it can satisfy the space requirements of entities of all sizes. In addition, this building offers excellent accessibility via public and passenger transport and has a high visibility.

There is 24-hour security, security and central reception, smoke detectors, internet, internal blinds, fibre optics, operable windows and sprinklers. Access is by magnetic card.

It is possible to rent a parking space in the garage for an additional fee.

From the top floors you can enjoy a magnificent view of Prague Castle and within walking distance you will find Letná Park. All in all, this building offers a unique and pleasant working environment that will be appreciated by both smaller and larger entities.

For more information, please contact the broker.