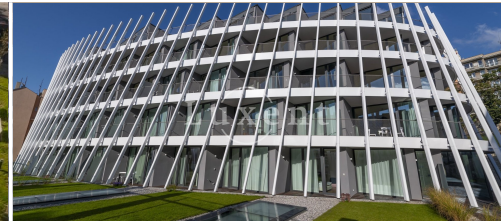




Spacious office for rent, 330 m², Prague 5 - Smichov



🏠 330 m²
📍 Holečkova, Praha 5 - Smíchov
 💰 on request



WITH THIS PROPERTY, YOU'LL BE ASSISTED BY

Anna-Maria Liubun
ASSISTANT

annamariia.liubun@luxent.cz
+420 770 189 189

Order number	N6631	Price	on request
Address	Holečkova, Praha 5 - Smíchov	Type	Offices
Usable area	330 m²	Parking	No
Low energy	No	Energy performance of the building	B - Very economical
Device	Partly	Lift	Yes
Date to move in	25. 9. 2023		

About real estate

We offer for rent a spacious office with a floor area of 330 sqm on the first floor of a beautiful newly completed residential project with elevator and also a number of extra services such as reception, swimming pool, wellness for an extra charge, fitness and a large common garden with barbecue area in a closed courtyard.

The offices are inspired by the latest trends in interior design. They are clean and elegant in design, creating a space that is not only functional but also attractive.

In the immediate vicinity of the building there are all amenities - services, shops, schools, cafes and quality restaurants. Great transport accessibility with connection to the Prague city ring road. Bus stop Holečkova right in front of the house. The Bertramka tram stop with a direct connection to the Anděl metro station is less than a five-minute walk from the house. Nearby are Petřínské sady, Mrázovka Park and the popular Nový Smíchov shopping centre.