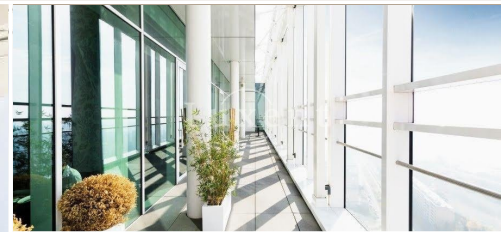




Rent of a commercial unit, 372 sqm, Praha 4 - Nusle



🏠 372 m² 📍 Hvězdova, Praha 4 📄 429 CZK per m2 / month



WITH THIS PROPERTY, YOU'LL BE ASSISTED BY

Filip Sloupenský
COMMERCIAL LEASE SPECIALIST

filip.sloupensky@luxent.cz
+420 771 229 229

Order number	N7089	Price	429 CZK per m2 / month + services
Address	Hvězdova, Praha 4	Type	Offices
Usable area	372 m²	Parking	Yes
Low energy	No	Energy performance of the building	G - Extremely uneconomical
Floor	4th floor	Device	Partly
Lift	Yes		

About real estate

We offer for rent office space of 372 sqm in a generous office building in Prague, located on Hvězdova Street in the Pankrác area. This building is the work of world renowned architect Richard Meier, which adds to its prestige and architectural value. The project offers companies an exclusive environment complemented by breathtaking views of the whole of Prague. This building meets the highest technical and design standards.

Unit price may vary depending on size and location.

With a total area of 49,000 sqm, the building is spread over 27 above-ground and 3 underground floors. This vast area provides space for hundreds of offices, which are designed to meet the modern needs of companies of different specializations. The conference facilities offer the ideal backdrop for corporate events, conferences and meetings, promoting efficiency and professionalism in business meetings.

For the convenience of employees and guests, the building has 800 parking spaces including a car wash. The building also houses various catering facilities that provide a variety of food and beverages, and a representative lobby with a café where visitors can enjoy a variety of coffee or small snacks.

Services: 185 CZK/sqm/month.

Parking: 130 EUR/month.