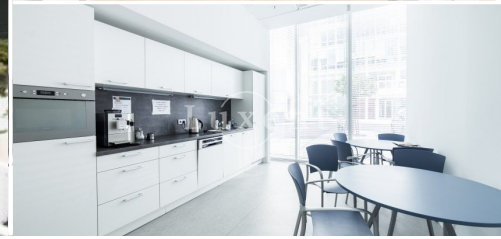
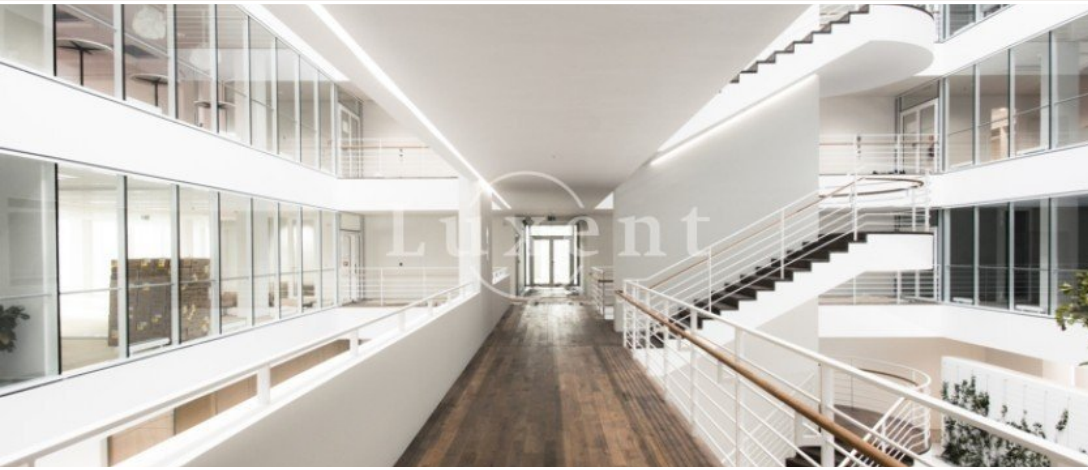




Rent of a commercial unit, 275 sqm, Prague 4



🏠 275 m² 📄 Hvězdova, Praha 4 📄 429 CZK per m² / month



WITH THIS PROPERTY, YOU'LL BE ASSISTED BY

Filip Sloupenský

COMMERCIAL LEASE SPECIALIST

filip.sloupensky@luxent.cz

+420 771 229 229

Order number	N7088	Price	429 CZK per m² / month + services
Address	Hvězdova, Praha 4	Type	Offices
Usable area	275 m²	Parking	Yes
Low energy	No	Energy performance of the building	G - Extremely uneconomical
Floor	8th floor	Device	Partly
Lift	Yes	Date to move in	27. 8. 2024

About real estate

We offer for lease 275 sqm of office space in a complex consisting of two modern office buildings, which together provide more than 34,200 sqm of office space. This large capacity is complemented by 430 parking spaces located in underground garages, ensuring comfortable parking for employees and visitors. This complex is located in Pankrác, one of the most vibrant and best accessible areas in Prague. The project provides high quality class "A" space.

The building offers a comprehensive set of modern amenities and services that provide a safe and comfortable office environment. A 24-hour security service and security guards, together with smoke detectors, contribute to maximum protection. There is a fibre optic internet connection. Internal blinds, air-conditioning and carpeting support comfort. Secure access is provided by a magnetic card system. This range of services and facilities makes the building an ideal location for modern offices that meet all requirements for security, comfort and efficiency. Within walking distance are banks, pharmacy, international hotels, post office, supermarket, dry cleaners, restaurants and cafes.

The strategic location of the complex plays a key role in its attractiveness. It is close to the D1 motorway, allowing easy access to the road network and is only 5 minutes drive from the Prague ring road (Jižní spojka). This accessibility is enhanced by the presence of public transport, including the metro station of line C - Pankrác, which is in the immediate vicinity of the building.

Service charges 145,- CZK/sqm/month + parking 140 EUR/month.