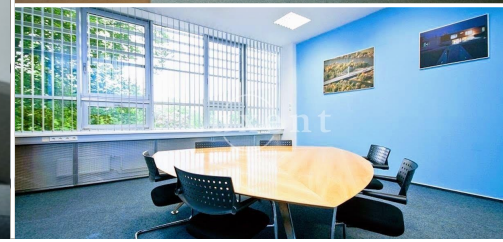




## An office space for rent, 200 sqm, Prague 10



🏠 200 m<sup>2</sup> 📍 Kubánské náměstí, Praha 10 💰 340 CZK per m<sup>2</sup> / month



WITH THIS PROPERTY, YOU'LL BE ASSISTED BY

**Filip Sloupenský**

COMMERCIAL LEASE SPECIALIST

filip.sloupensky@luxent.cz

+420 771 229 229

|              |                                   |                                    |   |
|--------------|-----------------------------------|------------------------------------|---|
| Order number | <b>N7151</b>                      | Price                              | <b>340 CZK per m<sup>2</sup> / month + services + VAT</b> |
| Address      | <b>Kubánské náměstí, Praha 10</b> | Type                               | <b>Offices</b>  |
| Usable area  | <b>200 m<sup>2</sup></b>          | Parking                            | <b>No</b>   |
| Low energy   | <b>No</b>                         | Energy performance of the building | <b>G - Extremely uneconomical</b>                         |
| Device       | <b>Partly</b>                     | Lift                               | <b>Yes</b>  |

## About real estate

We offer for rent an office in an office building in Prague's Vršovice directly on Kubánské náměstí. There are larger and smaller office units with the possibility of layout changes according to the client's wishes.

The office space for rent also has air conditioning, opening windows, double floors, blinds, high-speed elevators, security, restaurant with canteen and the possibility of coworking and renting serviced offices. On the ground floor there is a representative reception with unlimited access via magnetic cards.

There is a possibility of renting a shared meeting room and warehouse space. There are 267 parking spaces and as a bonus parking for visitors. The buildings are easily accessible by public transport and by car thanks to good connections to the Jižní spojka, D1 and D11.

Services: 174 CZK/sqm/month.

Parking: 90 EUR/month.

For more information, please contact us.