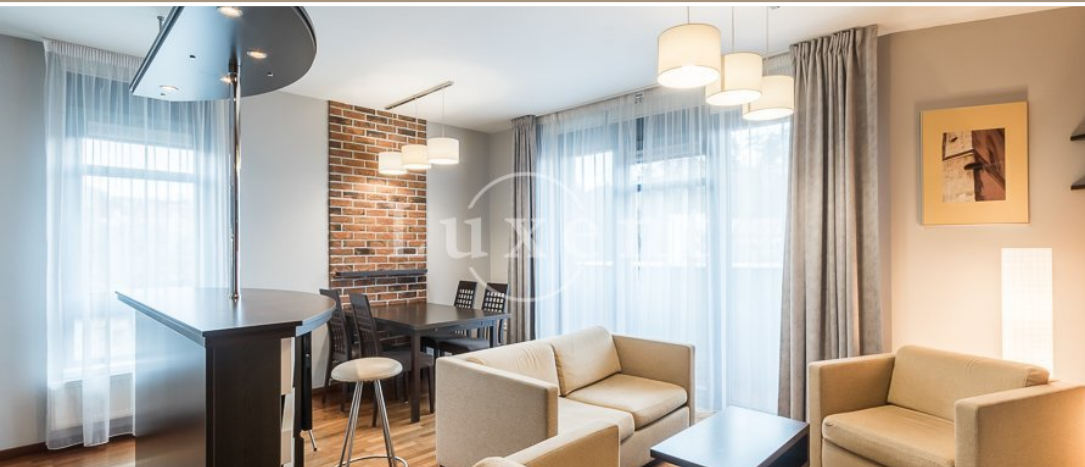




Rent of a flat, 3+kt/B/GS, 58 sqm, Prague 2 - New Town



🏠 63 m² 📄 Horská, Praha 2 - Nové Město 🗳️ Reserved



WITH THIS PROPERTY, YOU'LL BE ASSISTED BY

Mgr. Adam Kvasnička
LEASE SPECIALIST

adam.kvasnicka@luxent.cz
+420 730 511 611

Order number	N5691	Price	Reserved
Address	Horská, Praha 2 - Nové Město	Type	Apartments
Disposition	3 + kitchenette	Usable area	63 m²
Offer status	Reserved	Floor area	55 m²
Low energy	No	Energy performance of the building	G - Extremely uneconomical
Floor	3rd floor	Device	Yes
Parking	1	Garage	Yes
Balcony	8 m²	Lift	Yes
Year of construction	2008		

About real estate

We offer for rent a modern furnished 3+kt apartment with a living area of 55 sqm and a balcony. Located in a well-kept apartment complex with its own vineyard, accessible gazebo and reception. The property offers views of Vyšehrad and the historic wall separating the complex from the noise of the city.

The apartment is fully equipped with all appliances, dishes and plenty of storage space. The bathroom has a shower, washer and dryer. Floor heating in the bathroom contributes to a feeling of perfect comfort.

In the foreground of the complex, there is Lidl with access through garages and restaurant Potrefená Husa with delivery to the door for residents. All civic amenities within walking distance - shops, services, schools, quality restaurants, and cafes. Great transport accessibility, tram stop at the house, near the metro station B - Karlovo náměstí. Nearby, there are several recreation zones full of greenery - Folimanka Park, Štulcovy sady and the popular Vyšehrad complex.

The price includes all fees for house management, internet. Energy is paid in the form of a deposit (approx. 3,500 CZK/mo.).

In the complex, there are many 3+kt apartments with different dimensions and views from the balcony / terrace, photos are illustrative. Prices vary according to size.