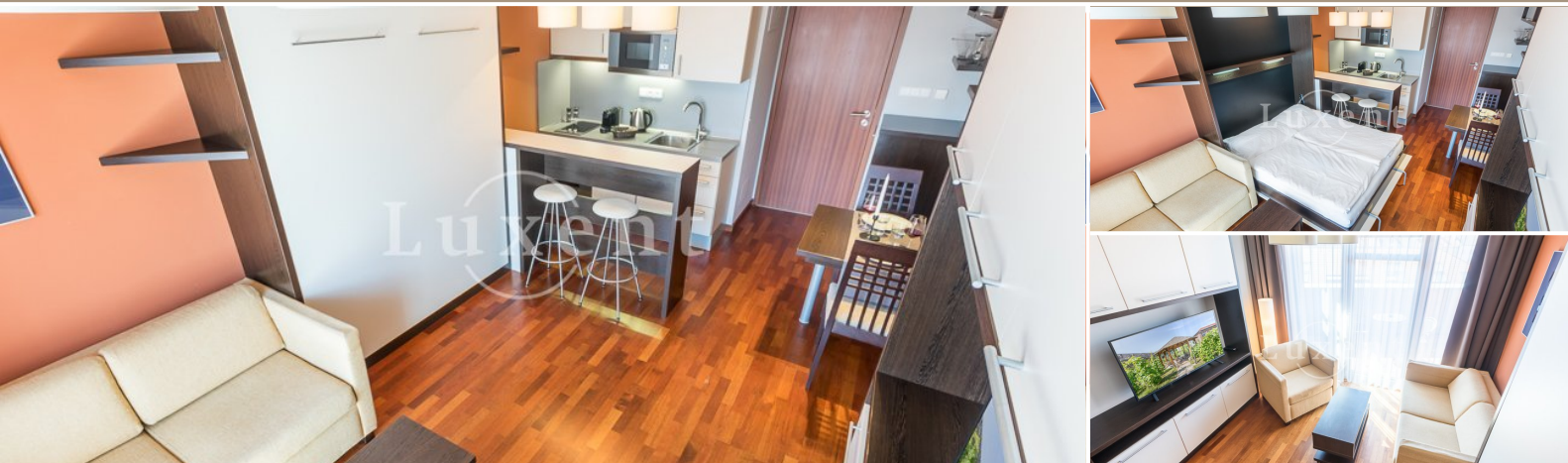




Rent of a flat, 1+kt/B/GS, 48 sqm, Prague 2 - New Town



🏠 40 m² 📄 Horská, Praha 2 - Nové Město 💰 26 500 CZK per month



WITH THIS PROPERTY, YOU'LL BE ASSISTED BY

Mgr. Adam Kvasnička
LEASE SPECIALIST

adam.kvasnicka@luxent.cz
+420 730 511 611

Order number	N5689	Price	26 500 CZK per month + services
Address	Horská, Praha 2 - Nové Město	Type	Apartments
Disposition	1 + kitchenette	Usable area	40 m²
Floor area	37 m²	Low energy	No
Energy performance of the building	G - Extremely uneconomical	Floor	3rd floor
Device	Yes	Parking	1
Garage	Yes	Balcony	2 m²
Lift	Yes	Year of construction	2008
Date to move in	25. 11. 2022		

About real estate

We offer for rent a modern furnished 1+kt apartment with a living area of 37 sqm and a balcony. Located in a well-kept apartment complex with its own vineyard, accessible gazebo and reception. The property offers views of Vyšehrad and the historic wall separating the complex from the noise of the city.

The apartment is fully equipped with all appliances, dishes and plenty of storage space. The bathroom has a shower, washer and dryer. Floor heating in the bathroom contributes to a feeling of perfect comfort.

In the foreground of the complex, there is Lidl with access through garages and restaurant Potrefená Husa with delivery to the door for residents. All civic amenities within walking distance - shops, services, schools, quality restaurants, and cafes. Great transport accessibility, tram stop at the house, near the metro station B - Karlovo náměstí. Nearby, there are several recreation zones full of greenery - Folimanka Park, Štulcovy sady and the popular Vyšehrad complex.

The price includes all fees for house management, internet and garage parking. Energy is paid in the form of a deposit.

In the complex, there are many studio apartments with different dimensions and views from the balcony / terrace, photos are illustrative. Prices vary according to size.